



**5 LINFOLD CLOSE, BRAINTREE CM7**

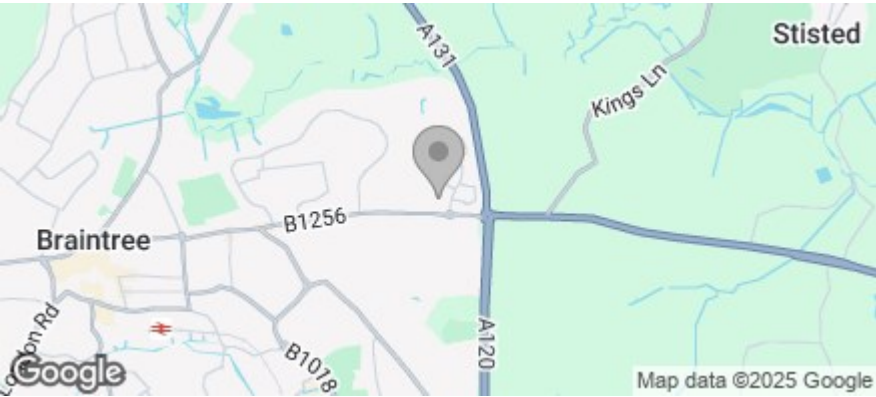
**GUIDE PRICE £675,000**

**5 Bedrooms | 2 Bathrooms | 3 Receptions**



Floor Plan

Area Map



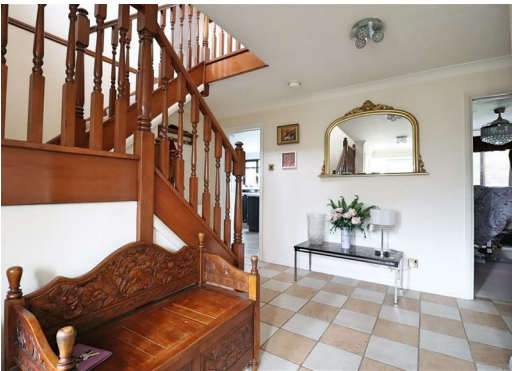
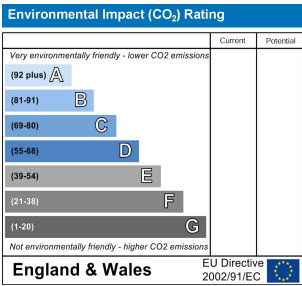
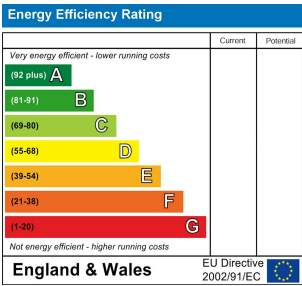
Accommodation

- FIVE BEDROOMS
- FOUR RECEPTION ROOMS
- INTEGRAL DOUBLE GARAGE
- STUDY
- KITCHEN/BREAKFAST ROOM
- UTILITY
- LARGE MASTER BEDROOM WITH DRESSING ROOM & EN-SUITE
- GREAT SIZE REAR GARDEN
- CUL-DE-SAC POSITION
- SOUGHT AFTER DEVELOPMENT CLOSE TO EXCELLENT SCHOOLS

Viewing

Please contact us on 01376 386555 if you wish to arrange a viewing appointment for this property, or require further information.

Energy Efficiency Graph



**Phone:** 01376 386555  
**Email:** info@branocsestates.co.uk  
**Website:** www.branocsestates.co.uk

Phoenix House 5 New Street  
Braintree  
Essex  
CM7 1ER

Branocs endeavour to maintain accurate depictions of properties in Virtual Tours, Floor Plans and descriptions, however, these are intended only as a guide and purchasers must satisfy themselves by personal inspection.

